



VICINITY MAP

SCALE: N11

PROJECT INFORMATION

SITE ADDRESS: 2200 BLOCK OF COOPER PT RD
 OLYMPIA, WA 98502
 TACTL NUMBER: 74202400000, 74202700000, 74202800000, 74202900000
 ZONING: R1
 SITE AREA: 29.99 AC
 WATER SERVICE: CITY OF OLYMPIA
 SEWER SERVICE: CITY OF OLYMPIA
 SOIL: MADONNA GRAVELLY Silt LOAM
 IMPROVEMENTS: ASPHALT GRAVELLY SWATH LOAM

MAXIMUM DENSITY CALCULATIONS

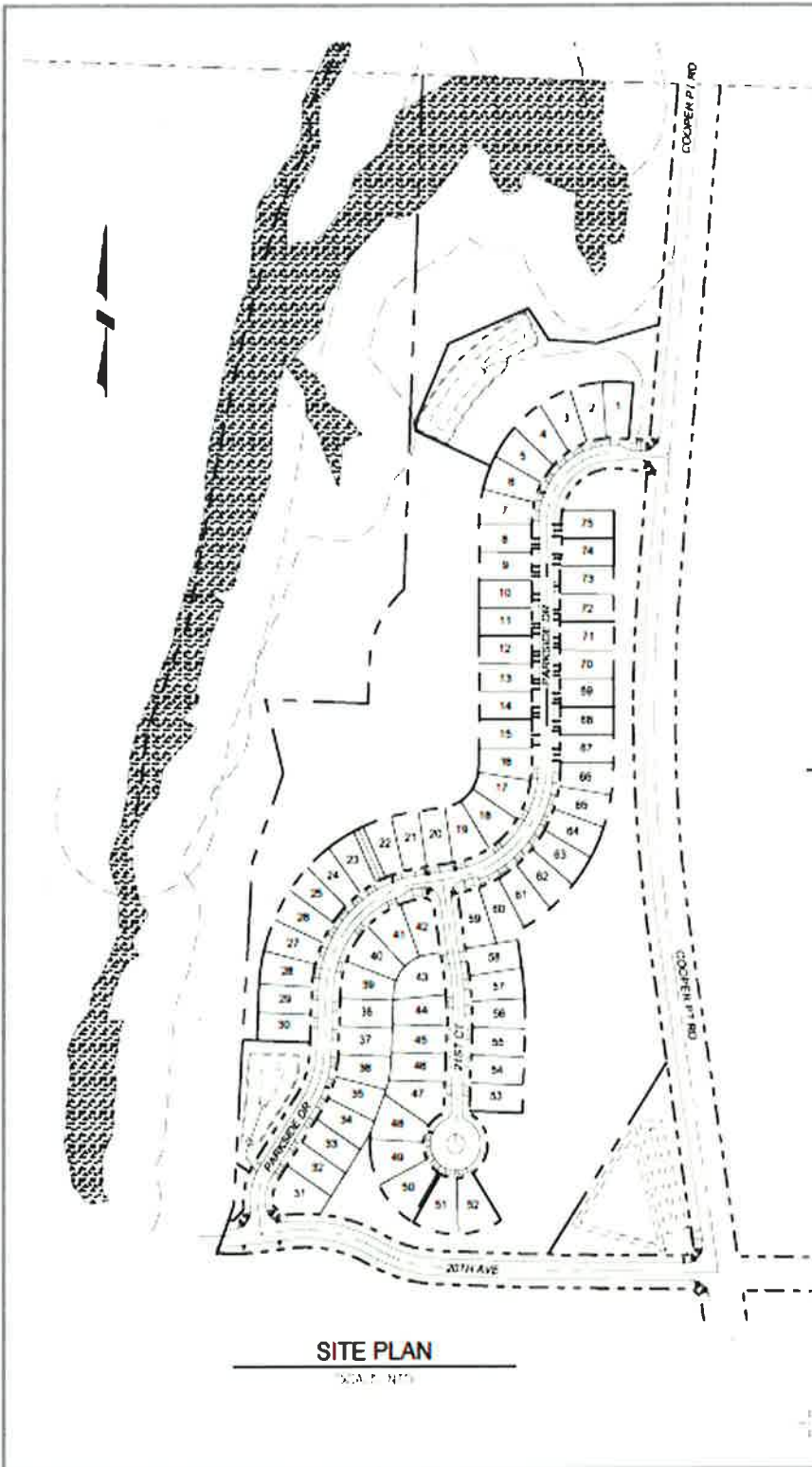
GROSS SITE AREA: 29.99 AC
 OFFICIAL AREA: 24 AC
 NET AREA: 20.5 AC
 MAX. DENSITY (UNITS/AC) = 12 UNITS
 TOTAL UNITS = 25 UNITS

MINIMUM DENSITY CALCULATIONS

GROSS SITE AREA: 29.99 AC
 GROSS PLOTS: 8.0 AC
 OPEN SPACE: 4.0 AC
 PAVED AREA: 4.32 AC
 OFFICIAL AREA: 4.32 AC
 NET AREA: 4.32 AC
 MAX. DENSITY (UNITS/AC) = 25 UNITS
 TOTAL UNITS = 75 UNITS

LEGEND

P	-L	-----	HOUSING
Driv	SEE HERE - LT	-----	3 - 1/2"
	-TE - HUE	-----	2"
	-TE - SEE L&T	-----	1 1/2"
	H L - LT I	-----	1 1/2"
	T - 4 L&T	-----	1 1/2"
	T - 4 - HUE	-----	1 1/2"
	F - TE	-----	1 1/2"
	CITR - REH - T	-----	1 1/2"
	CITR - TE - LC	-----	1 1/2"
	-TE - SEE - HUE	-----	1 1/2"
A	I - TE	-----	1 1/2"
Dr	SEE HERE - LT	-----	1 1/2"
P	-L	-----	1 1/2"
	-TE - SEE F&H - LC	-----	1 1/2"
	-TH - I	-----	1 1/2"
	I - H	-----	1 1/2"
Dr	SEE HERE - LT	-----	1 1/2"
P	-L	-----	1 1/2"
	-TE - SEE F&H - LC	-----	1 1/2"
	-TH - I	-----	1 1/2"
	I - H	-----	1 1/2"
	-TE - SEE F&H - LC	-----	1 1/2"
	-TH - I	-----	1 1/2"
	I - H	-----	1 1/2"



SITE PLAN

SCALE: N11

Parkside on Cooper Point Preliminary Plat, File No. 14-0161
 KPFF Consulting Engineers
 4200 6th Ave SE STE 309
 Lacey WA 98503
 (360) 292-7230

